

Install Clearcase Server 7.1 Linux (Redhat)

Installing Clearcase Server 7.1 on Red Hat Enterprise Linux AS release 4 (Nahant Update 8)

Prerequisites

Apply this changes to the clearcase software packages

```
chmod +x /root/cc/InstallerImage_linux/jre_5.0.3.sr8a_20080811b/jre/bin/java
chmod +x /root/cc/InstallerImage_linux/install
chmod +x /root/cc/launchpad/*.sh
```

Extra software packages needed:

```
up2date -i gcc
```

Kernel Image

```
cd /tmp
wget
http://fermi.inf.unibz.it/cdimages/kernel-devel-2.6.9-89.0.25.EL.x86_64.rpm
rpm -i kernel-devel-2.6.9-89.0.25.EL.x86_64.rpm
```

Kernel source

```
up2date redhat-rpm-config rpm-build
up2date --get-source kernel
rpm -ivh /var/spool/up2date/kernel*.src.rpm
cd /usr/src/redhat/SPECS
rpmbuild -bp --target=i686 kernel-2.6.spec
cp -a /usr/src/redhat/BUILD/kernel-2.6.9/linux-2.6.9 /usr/src
ln -s /usr/src/linux-2.6.9 /usr/src/linux
```

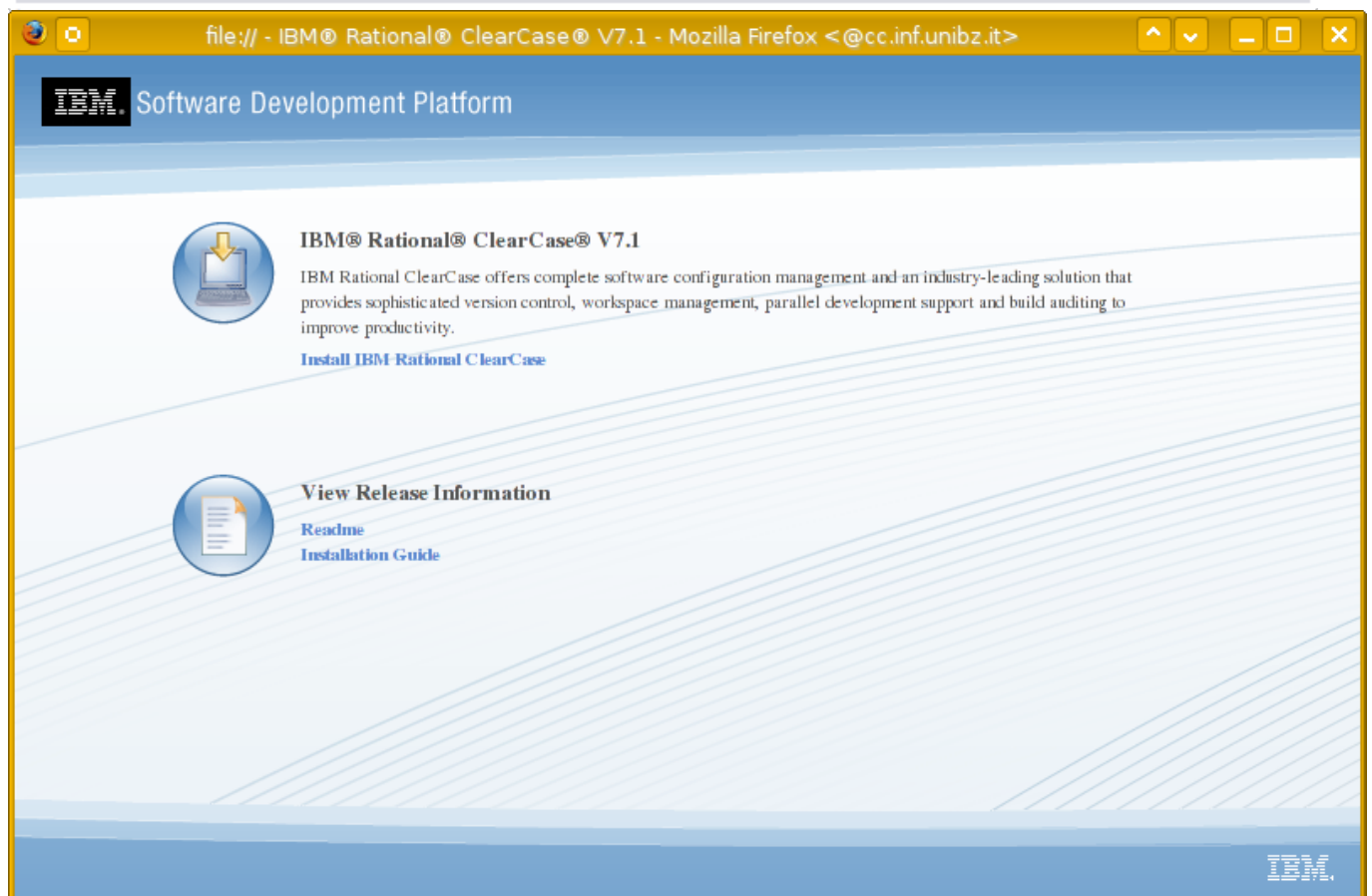
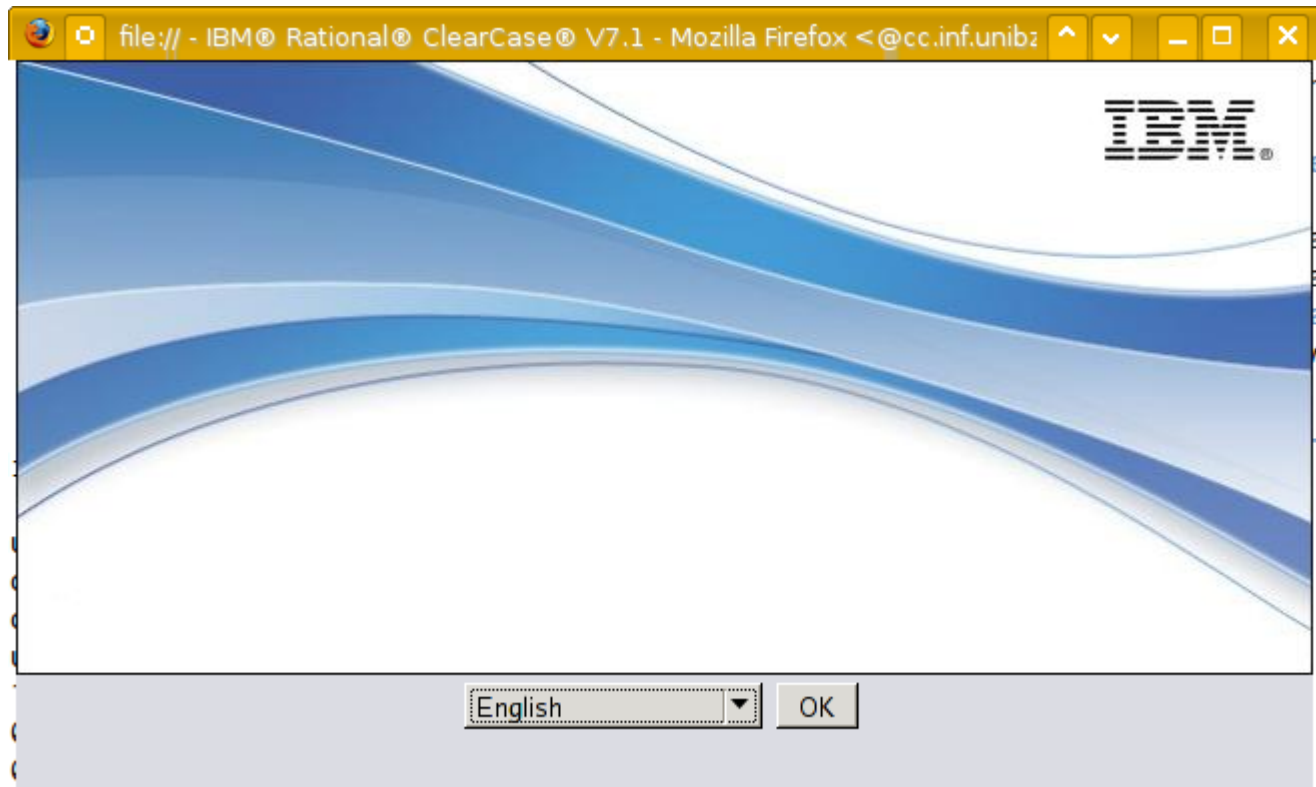
To allow mvfs to work ok!

```
mkdir /var/adm/rational/clearcase
touch /var/adm/rational/clearcase/no_mvfs_tag
```

Installation

```
[root@cc cc]# ./launchpad.sh
```

Here are the screenshots!!!!



IBM Installation Manager <@cc.inf.unibz.it>

Install Packages

Select the packages you want to install.

Installation Packages	Status	Vendor	License Key Type
IBM® Installation Manager			
Version 1.2.1		IBM	No key required
IBM® Rational® ClearCase®			
Version 7.1		IBM	

☐ Show all versions

Check for Other Versions and Extensions

Details

IBM® Installation Manager 1.2.1

IBM® Installation Manager [More info...](#)

- Repository: /root/cc/InstallerImage_linux

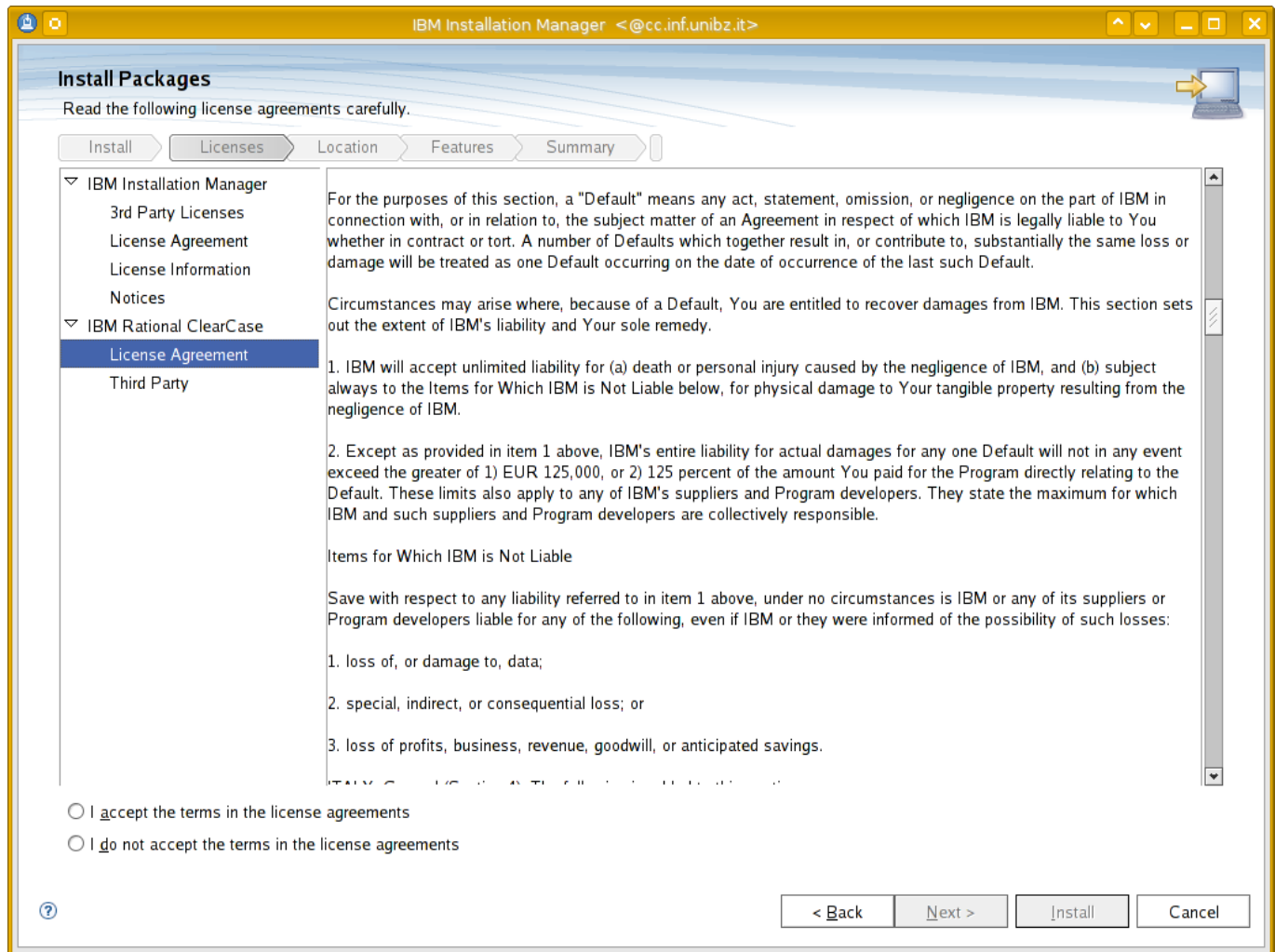
?

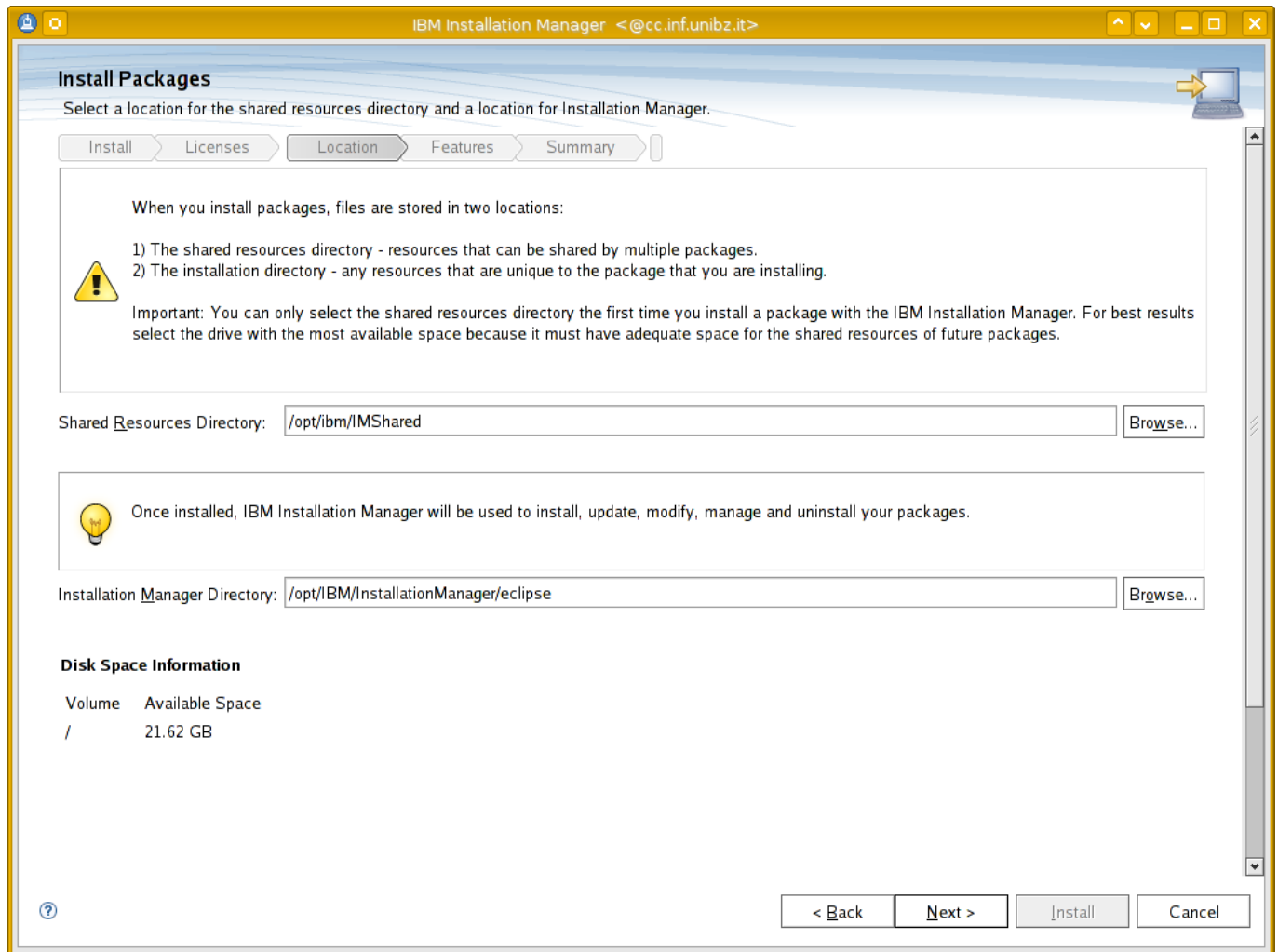
< Back

Next >

Install

Cancel





IBM Installation Manager <@cc.inf.unibz.it>

Install Packages

A package group is a location that contains one or more packages. Some packages can be installed into a common package group and will share a common user interface. Select an existing package group, or create a new one.

Install

Licenses

Location

Features

Summary

☐ Use the existing package group

☒ Create a new package group

Package Group Name	Installation Directory
IBM Rational SDLC	/opt/ibm/RationalSDLC

Package Group Name: IBM Rational SDLC

Installation Directory: /opt/ibm/RationalSDLC

Browse...

Details

Shared Resources Directory: /opt/ibm/IMShared

Disk Space Information

Volume	Available Space
/	21.62 GB

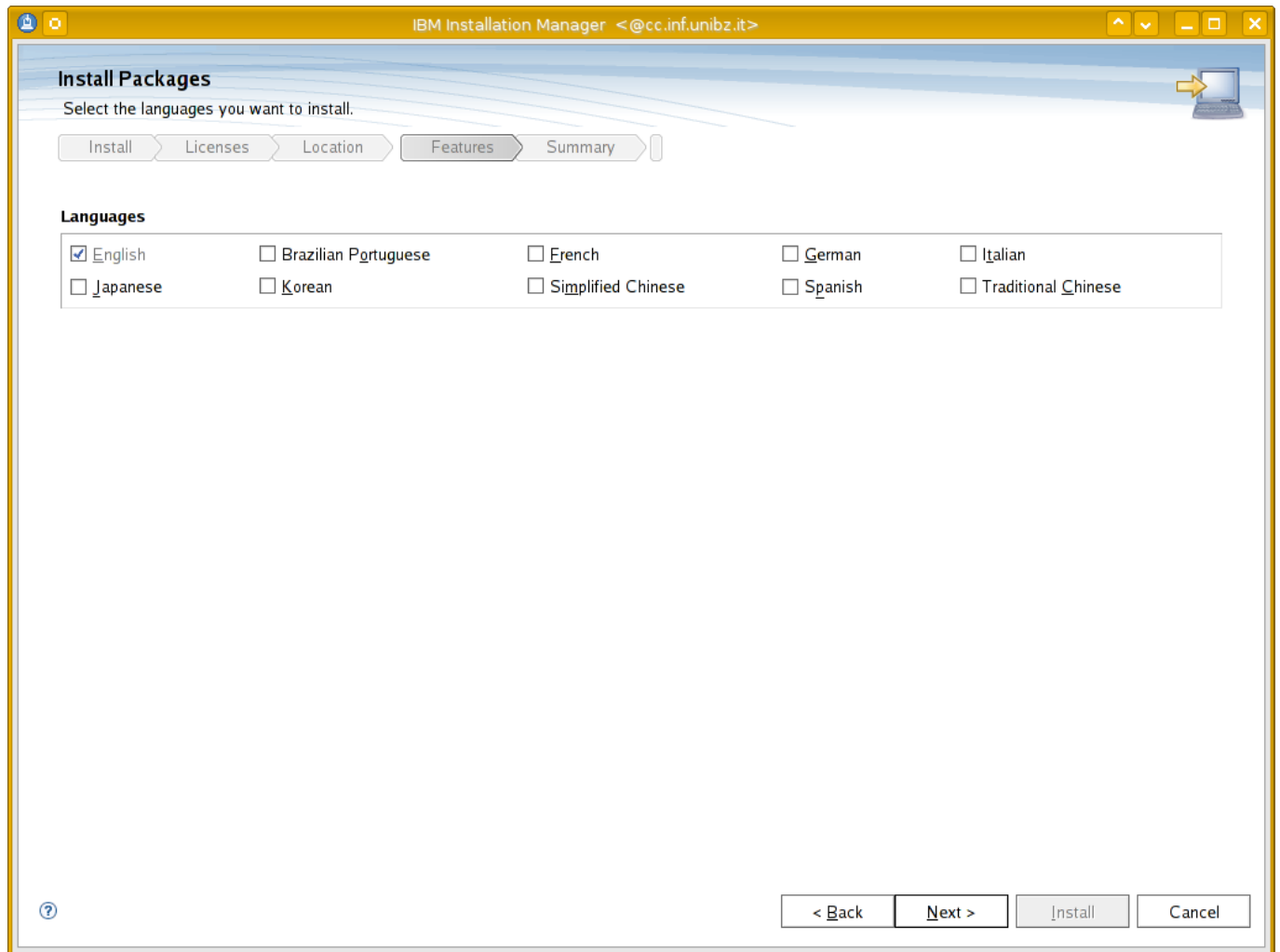
?

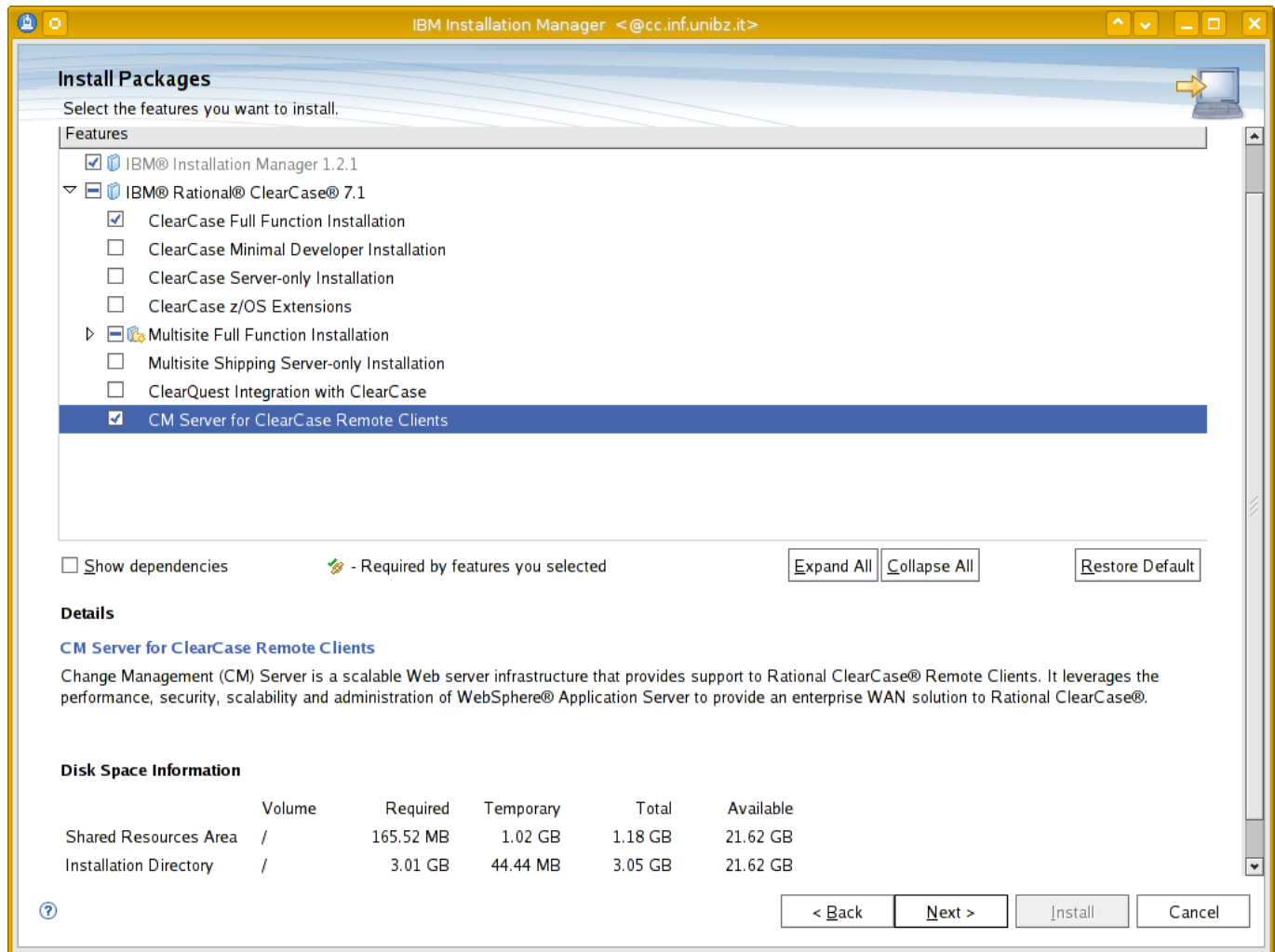
< Back

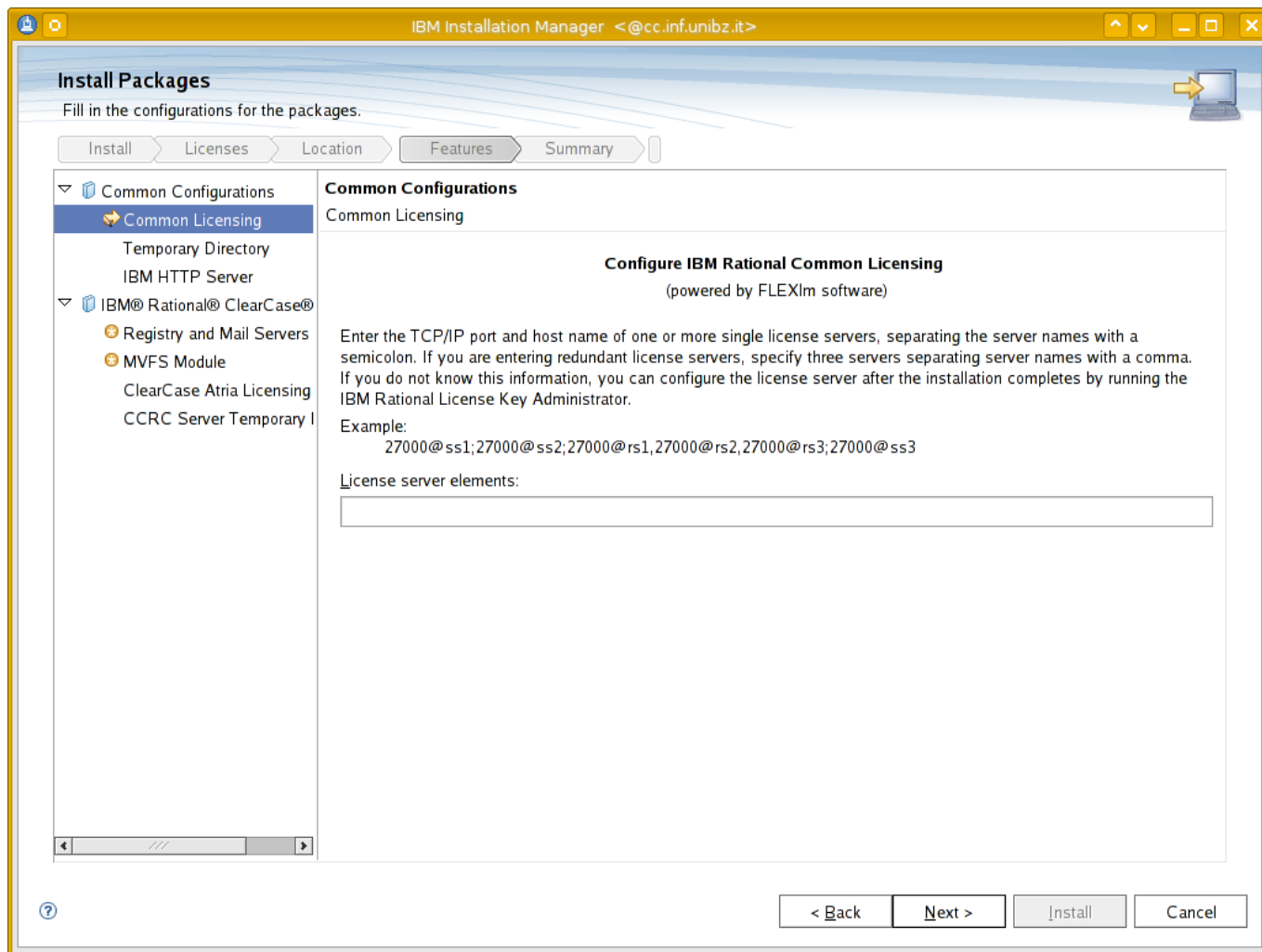
Next >

Install

Cancel







IBM Installation Manager <@cc.inf.unibz.it>

Install Packages

Fill in the configurations for the packages.

InstallLicensesLocationFeaturesSummary

Common Configurations

Common Licensing

Temporary Directory

IBM HTTP Server

IBM® Rational® ClearCase®

Registry and Mail Servers

MVFS Module

ClearCase Atria Licensing

CCRC Server Temporary I

Common Configurations

Common Licensing

Configure IBM Rational Common Licensing

(powered by FLEXlm software)

Enter the TCP/IP port and host name of one or more single license servers, separating the server names with a semicolon. If you are entering redundant license servers, specify three servers separating server names with a comma. If you do not know this information, you can configure the license server after the installation completes by running the IBM Rational License Key Administrator.

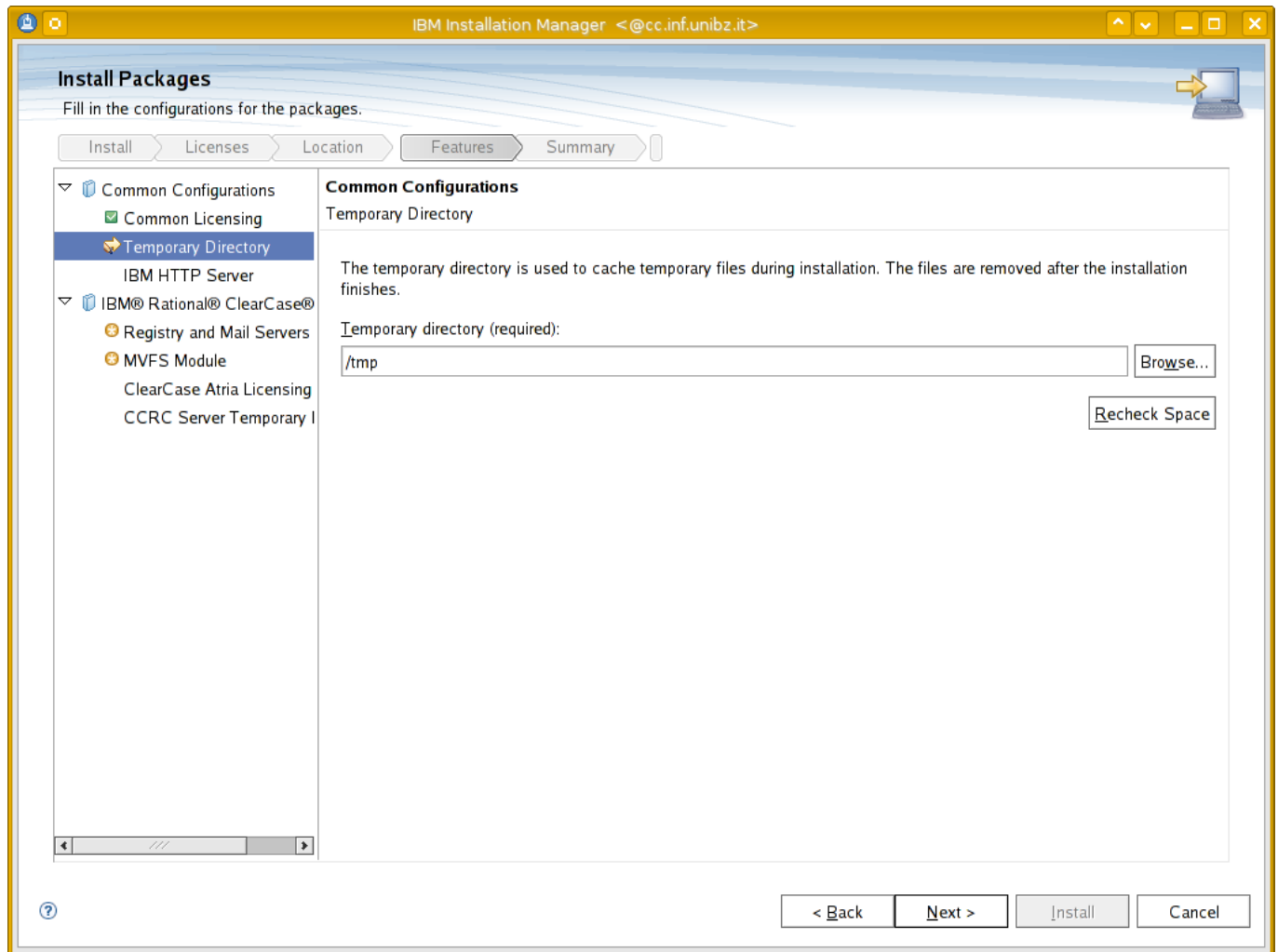
Example:
27000@ss1;27000@ss2;27000@rs1,27000@rs2,27000@rs3;27000@ss3

License server elements:

27001@license.inf.unibz.it

27001@license.inf.unibz.it

BackNext >InstallCancel



IBM Installation Manager <@cc.inf.unibz.it>

Install Packages

Fill in the configurations for the packages.

Install

Licenses

Location

Features

Summary

Common Configurations

☒ Common Licensing

☒ Temporary Directory

☒ IBM HTTP Server

IBM® Rational® ClearCase®

☒ Registry and Mail Servers

☒ MVFS Module

ClearCase Atria Licensing

CCRC Server Temporary I

Common Configurations

IBM HTTP Server

Port for HTTP requests:

80

IBM HTTP Server user name:

nobody

IBM HTTP Server group name:

nobody

< Back

Next >

Install

Cancel

<https://wiki.inf.unibz.it/>

Printed on 2024/05/20 23:28

IBM Installation Manager <@cc.inf.unibz.it>

Install Packages

Fill in the configurations for the packages.

Install > Licenses > Location > **Features** > Summary >

- Common Configurations
 - ☒ Common Licensing
 - ☒ Temporary Directory
 - ☒ IBM HTTP Server
- IBM® Rational® ClearCase®
 - Registry and Mail Servers**
 - MVFS Module
 - ClearCase Atria Licensing
 - CCRC Server Temporary I

Configuration for IBM® Rational® ClearCase® 7.1

Registry and Mail Servers

The registry server stores VOB and view tag information.

Registry server host name (required):

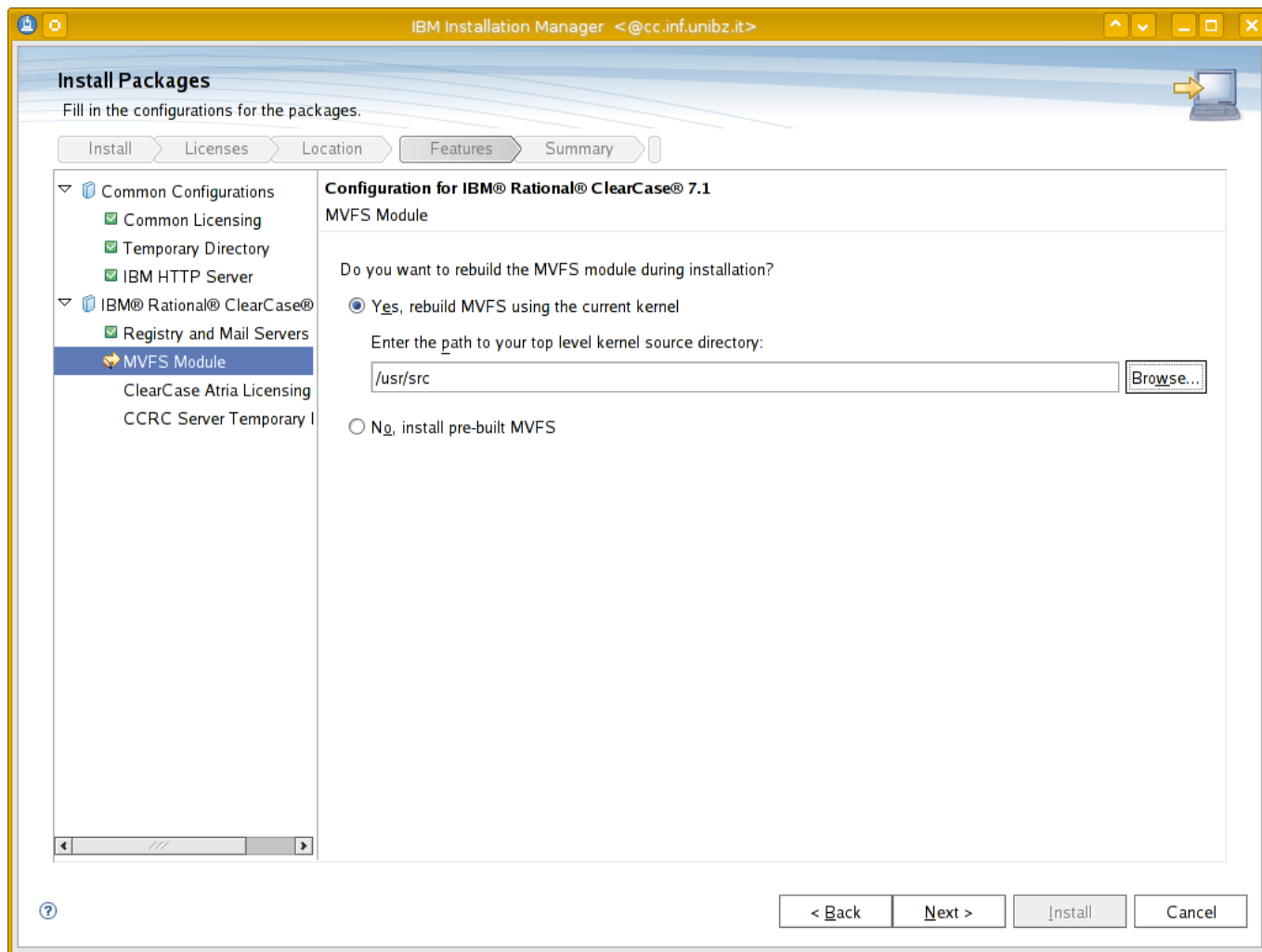
A network region defines a namespace of VOB and view tags.

UNIX registry region (required):

The SMTP mail server is used to send ClearCase e-mail notifications.

SMTP Mail server host name:

< Back Next > Install Cancel



IBM Installation Manager <@cc.inf.unibz.it>

Install Packages

Fill in the configurations for the packages.

Install > Licenses > Location > **Features** > Summary

- Common Configurations
 - Common Licensing
 - Temporary Directory
 - IBM HTTP Server
- IBM® Rational® ClearCase®
 - Registry and Mail Servers
 - MVFS Module
 - ClearCase Atria Licensing**
 - CCRC Server Temporary I

Configuration for IBM® Rational® ClearCase® 7.1

ClearCase Atria Licensing

Selecting Atria licensing overrides common licensing in Rational ClearCase.

☐ Use ClearCase Atria Licensing

Where is your license server?

☐ On a remote host
Enter remote host name (required):

☐ On my local host
Enter license keys (required):

< Back Next > Install Cancel

IBM Installation Manager <@cc.inf.unibz.it>

Install Packages

Fill in the configurations for the packages.

Install

Licenses

Location

Features

Summary

Common Configurations

☒ Common Licensing

☒ Temporary Directory

☒ IBM HTTP Server

IBM® Rational® ClearCase®

☒ Registry and Mail Servers

☒ MVFS Module

☒ ClearCase Atria Licensing

☒ CCRC Server Temporary

Configuration for IBM® Rational® ClearCase® 7.1

CCRC Server Temporary Directory

Enter a directory that does not exist. This directory will be removed as part of the uninstalling process.

CCRC server temporary directory (required):

< Back

Next >

Install

Cancel

<https://wiki.inf.unibz.it/>

Printed on 2024/05/20 23:28

IBM Installation Manager <@cc.inf.unibz.it>

Install Packages

Review the summary information. Click Back to make changes, or click Install.

Install

Licenses

Location

Features

Summary

Target Location

Package Group Name: IBM Rational SDLC

Installation Directory: /opt/ibm/RationalSDLC

Shared Resources Directory: /opt/ibm/IMShared

Packages

Packages

IBM® Installation Manager 1.2.1

IBM® Rational® ClearCase® 7.1

- ClearCase Full Function Installation
- CM Server for ClearCase Remote Clients

Environment

English

Disk Space Information

Total Available Space

/

20.88 GB

Total Download Size: 1.22 GB

Total Installation Size: 4.23 GB

Repository Information

Files will be retrieved from the following locations:

Repository	Download Size
/tmp/installerRepository56909.tmp	46.77 MB
/root/cc/InstallerImage_linux	37.02 MB

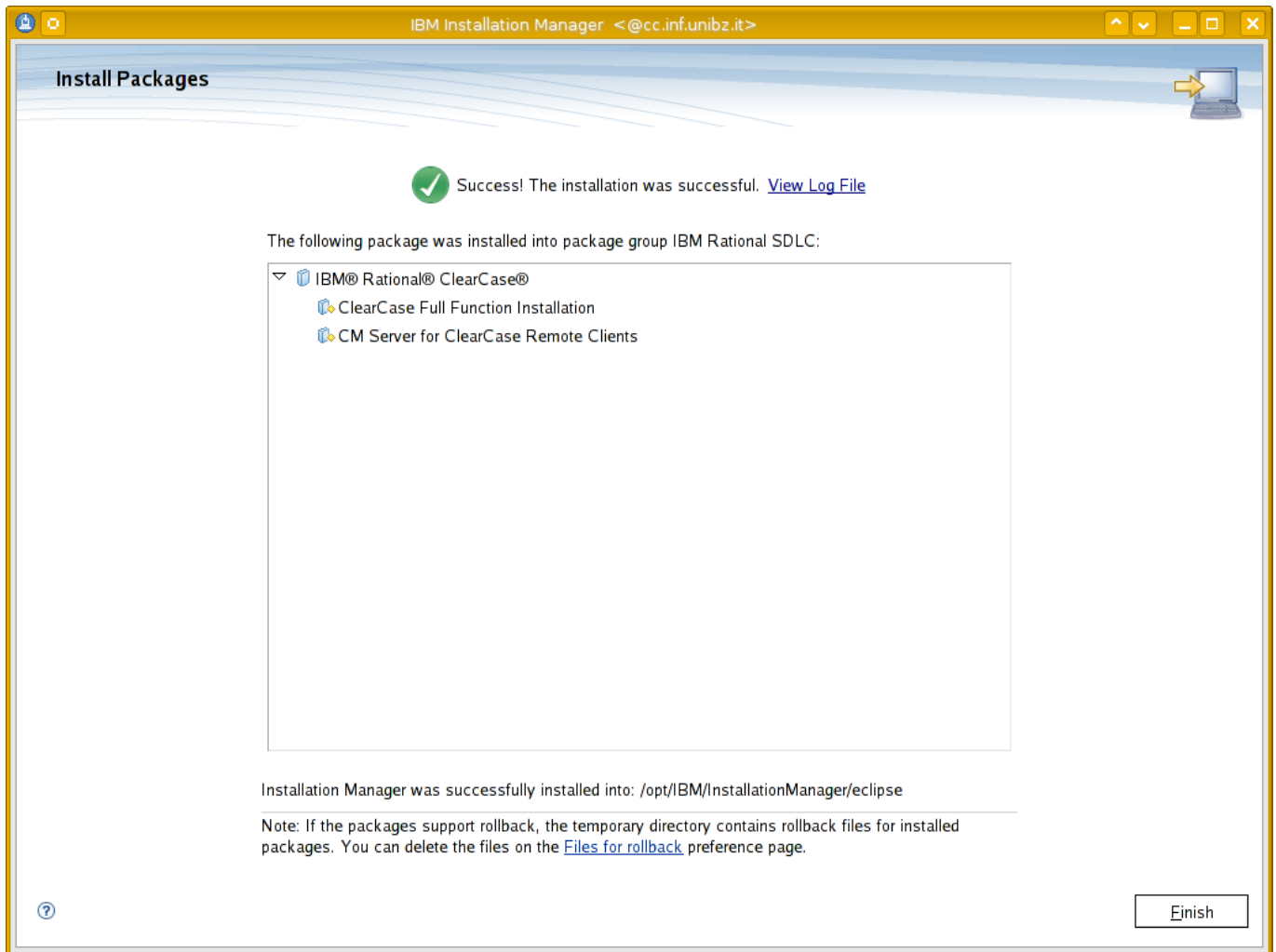
?

< Back

Next >

Install

Cancel



Post Installation

```
rm /var/adm/rational/clearcase/no_mvfs_tag
```

Status/Stop/Start/Restart ClearCase

```
/usr/atria/etc/atria_start status|stop|start|restart
```

Update/Modify Installation

To update or modify launch the Installation Manager

```
/opt/IBM/InstallationManager/eclipse/launcher
```

Rebuild the MVFS without reinstalling Rational ClearCase

Run the command:

```
cd /var/adm/rational/clearcase/mvfs/mvfs_src
```

Clean up the results of previous builds:

```
make clean
```

Build the MVFS modules:

```
make
```

You will be prompted for the path to the Linux kernel source directory. The default prompt is `/lib/modules/`uname -r`/build`.

Install the newly built MVFS modules into the proper directory under `/lib/modules`, so that the MVFS modules will be loaded into the kernel when Rational ClearCase starts:

```
make install
```

Restart Rational ClearCase.

```
/opt/rational/clearcase/etc/clearcase stop  
/opt/rational/clearcase/etc/clearcase start
```

After the installation process has completed, test that Rational ClearCase has been properly installed by running the `cleartool -version` command. You should see output indicating the version of MVFS that has been installed, as in the following example.

```
/opt/rational/clearcase/bin/cleartool -version
```

```
ClearCase version 7.1.1.1 (Wed Mar 31 15:49:36 EDT 2010)  
(7.1.1.01.00_2010A.D100330)  
@(#) MVFS version 7.1.1.1 (Thu Feb 25 07:15:14 2010) built at $Date:  
2010-07-05.12:00:58 (UTC) $  
cleartool                7.1.1.1 (Fri Feb 26 23:24:30 2010)  
db_server                7.1.1.1 (Thu Feb 25 08:15:16 2010)  
VOB database schema version: 54
```

Install Clearcase Client 7.1 Linux (Redhat)

Build kernel module from source

Get mvfs source from e.g. Clearcase Server

```
scp -r /var/adm/rational/clearcase/mvfs/mvfs_src/ root@clearcase-  
client:/var/adm/rational/clearcase/mvfs/
```

Install kernel source

```
up2date --get-source kernel
```

Read through how to compile kernel module:

```
more /var/adm/rational/clearcase/mvfs/mvfs_src/README.txt
```

Eclipse Clearcase Client

Using Eclipse with Clearcase Client plugin

- Download eclipse from <http://www.eclipse.org>
- Add New Software:
<http://www3.software.ibm.com/ibmdl/pub/software/rationalsdp/clearcase/ccrc/701/update/>

From:
<https://wiki.inf.unibz.it/> - **Engineering-Tech Wiki**

Permanent link:
https://wiki.inf.unibz.it/doku.php?id=public:install_clearcase_7.1_linux_redhat

Last update: **2019/01/16 10:03**

